

Quantitative analysis, basin evolution and paleoecology of Early Miocene ostracods in the southwest of Kerman, Iran

Mohammad Javad Hassani^{1*}, Fatemah Hosseinipour²

¹ Department of Ecology, Institute of Science and High Technology and Environmental Sciences, Graduate University of Advanced Technology, End of Haftbagh Highway, Kerman, Iran.

² Department of Geology, Payame Noor University of Kerman, Zangiabad Branch, Kowthar Blvd. Kerman, Iran.

*Corresponding author, e-mail: mjhassani887@gmail.com

(received : 08/01/2017 ; accepted: 08/04/2018)

Abstract

This paper focuses on the quantitative analyses of Early Miocene ostracods in south and north of the Sirjan area, southwest of Kerman. Detailed studies resulted in identification of 23 species of ostracoda. The coexisting benthic foraminifera and comparing the identified microfauna assemblages with previous studies confirms the Early Miocene age for the strata. The quantitative analysis show a low diversity in the ostracoda assemblages, in compare with other areas. The ostracoda community is classified into seven morphogroups. Several communities are recorded in the ostracoda morphogroups, which reflects basic changes in the basin condition. The morphogroups analysis also reveals that the basal parts of the sections are deposited in shallow and poorly ventilated waters, while a normal condition prevailed through upward. A period of instability is predominant after the normal condition and final stages of deposition took place in the near shore environment, which reflects the end of sea life. The stratigraphical position and structural history of the basement suggest that syndepositional tectonic activities were responsible for the fluctuations in the environmental conditions. This suggestion is confirmed by comparing the studied area with adjacent areas, where similar deposits are deposited on different basements.

Keywords: *Ostracods; Lower Miocene; Basin Evolution; Sirjan; Kerman.*

Introduction

During the Cenozoic, various important marine basins have been developed by tectonic activities in the Iranian plateau. In Central Iran structural zone (Dabaghi Sadr & Schmiedl 2017). The Oligo-Miocene deposits are the most famous and studied Cenozoic marine strata. In general, these deposits comprise of marl, argillaceous limestone, limestone, reefal limestone and minor clastic and evaporitic deposits and is named as Qom Formation (Stöcklin & Setudehnia 1971). Due to presence of reefal and evaporitic units in the Qom Formation deposits, valuable hydrocarbon reservoirs are formed in this formation. The formation has been studied by many researchers from different aspects, because of its hydrocarbon capability (Mohammadi & Ameri 2015; Amirshahkarami & Naimi 2016; Karami-Movahed *et al.*, 2016; Roozpeykar & Moghaddam 2016; Sardarabadi *et al.*, 2016; Dabaghi Sadr & Schmiedl 2017; Daneshian & Ghanbari 2017; Daneshian *et al.*, 2017; Zágoršek *et al.*, 2017). The Qom Formation is the most fossiliferous outcrop of Iran, especially from the view point of foraminifera and ostracods. The ostracods are employed as a powerful tool for paleoceanographical analysis and are used by many researchers (Danielopol *et al.*, 2007; Irizuki *et al.*, 2007; Reeves *et al.*, 2007;

Gopalakrishna *et al.*, 2008; Hosseinipour *et al.*, 2010; Pieri *et al.*, 2009; Torkzadeh *et al.*, 2011; Wilson *et al.*, 2014). However a few studies have been carried out on Qom Formation ostracods, specially in the Kerman province (Hosseinipour *et al.*, 2010; Torkzadeh *et al.*, 2011; Hassani, 2012). One of the most conspicuous feature of Oligo-Miocene deposits in study sections, compare with adjacent area, is its relatively low diversity of fauna and also more lithological and facies changes through the sections. This research, tries to describes the ostracod content of the Lower Miocene strata in south and north parts of the Sirjan area (SW of Kerman province, SE Iran) for the first time from the microbiostratigraphical and paleoecological aspects.

Geological settings and stratigraphy

The present geology and morphology of the Iranian Plateau have been formed by complex structural, sedimentological, igneous and metamorphic activities (Aghanabati, 2004). Based on these essential differences, several authors divided the Iranian Plateau into different structural zones (Stocklin, 1968; Nabavi, 1976; Stampfli, 1978; Alavi, 1991). According to these classifications, the Iranian Plateau is divided into eight main structural zones (Fig. 1A).

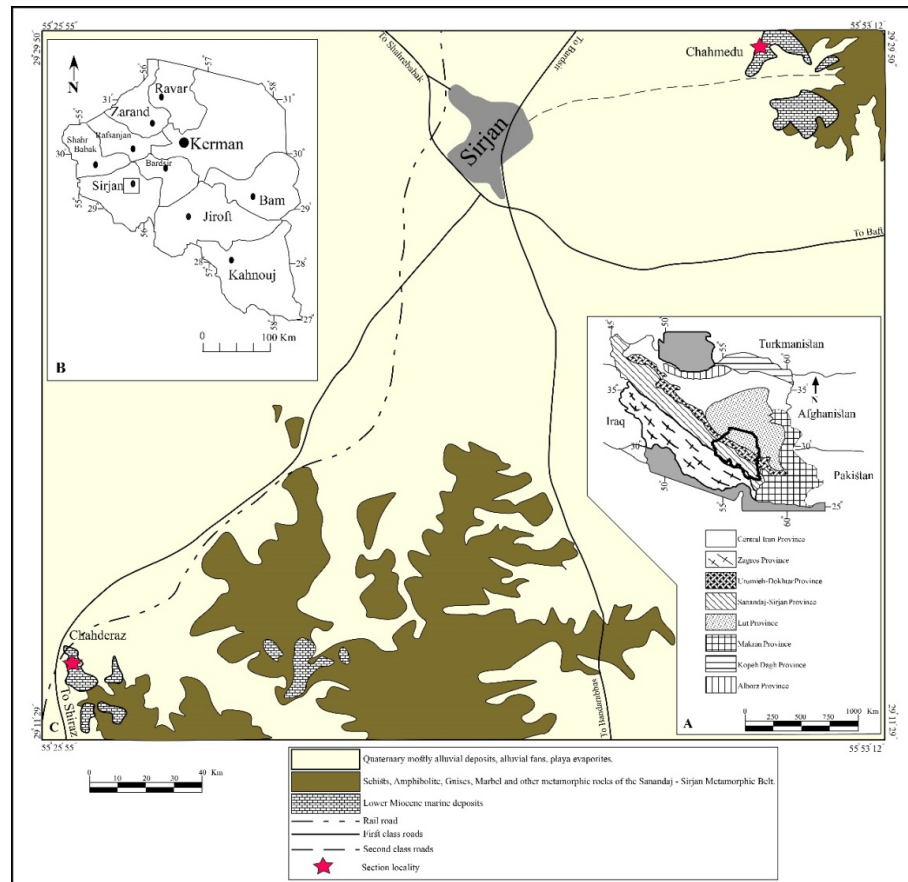


Figure 1. A, the major structural zones of the Iranian Plateau and the location of Kerman Province (Sadeghi *et al.*, 2010); B, the location of studied area in Kerman Province; C, The simplified geological map of the study area.

The studied area locates in the Sanandaj-Sirjan Metamorphic Belt in the Kerman Province (Fig. 1B). In this region, metamorphic rocks constitute the most common unites, while the Lower Miocene deposits outcrop as small patches. Around the Sirjan city, these deposits are cropped out in the northeastern and southwestern parts (Fig. 1C) and mostly consist of marl, argillaceous limestone and reefal limestone. The studied sections are located in two different localities. The first, near Chahderaz village, at the south ($55^{\circ} 26' 36''$ E, $29^{\circ} 11' 54''$ N), and the second, near the Chahmedu village, at the north ($55^{\circ} 49' 55''$ E, $29^{\circ} 32' 27''$ N) of Sirjan, (Fig. 1C). Both sections are composed essentially of greenish marl and light cream limestone strata. These sections are underlain nonconformably by a low to medium graded metamorphic rocks (Fig. 2), while their upper surface is covered by weathered and eroded deposits. The Oligo-Miocene Qom Formation sedimentary basin has been assumed as a critical part of the Tethyan Seaway, which has been located at the connection area between the

Mediterranean and Indo-Pacific domains of the Tethys Ocean (Reuter *et al.*, 2007).

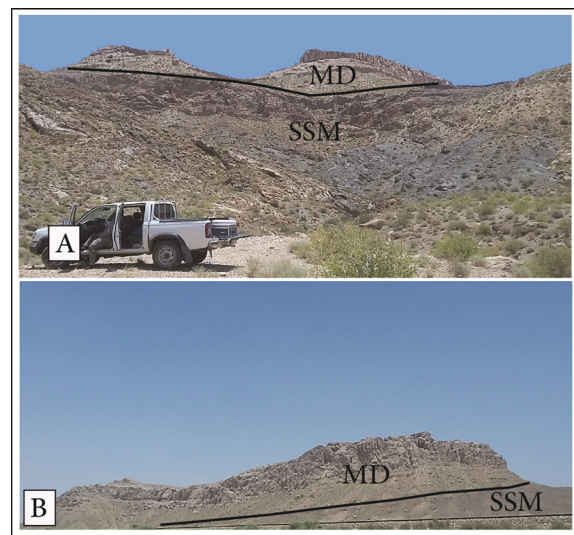


Figure 2. The lithological units in the stratigraphic sections. A, Chahmedu section; B, Chahderaz section. SSM, metamorphic rocks of the Sanandaj-Sirjan Zone; MD, Miocene deposits

Therefore, paleoceanographic interpretations in such terminal part of the main basin could be helpful to clarify the common ambiguities about the evolution of the whole basin.

Material and methods

The total thickness of the Chahderaz section is about 150 m, comprises of 97.5 m. marl at the base, 15 m. reefal limestone in the middle part, 15 m. marl in the upper part and 22.5 m. limestone at the top. The Chahmedu section consists of about 63 m. marl with fossiliferous argillaceous limestone intercalations at the base, 28 m. reefal limestone in the middle part, 23 m. marl in the upper part and 6 m. limestone at the top. Totally, 74 samples from the marls and 15 samples from the hard rocks were collected from the studied strata. To prevent contamination from eroded layers, loose samples were taken from the bottom of a half meter deep holes. About 250 gr. dried sediments of each sample were soaked in the diluted 10% hydrogen peroxide solution for 24 hours, and once disaggregated washed through a 63µm sieve (Gebhardt, 2004). The total ostracod content of samples were handpicked and counted, using a

stereomicroscope. The best preserved forms of identified ostracods photographed by a Phenom Pro-X Desktop Scanning Electron Microscope in the Payame Noor University of the Yazd. For paleoecological and basin analyses, the Fisher diversity index measured for each sample. Based on morphological characteristics and ornament similarities, the identified ostracods classified in to seven clusters (morphogroups), by R-mode clustering method using SPSSV. 19 Software. All the samples are housed in the museum of the Graduate University of Advanced Technology, Kerman.

Systematic Paleontology

In general, 23 species related to 19 genera of ostracoda have been identified, among which 17 genera belong to podocopids and 2 genera to platycopids (Tab. 1). Although the species are reported for the first time from the studied sections, most of them are reported from the Cenozoic deposits of various locations in the world. This paper deals with brief systematic state and conspicuous remarks are outlined.

Table 1: The identified ostracoda, the letter of them in the plate and their abundance in the studied sections.

Letter in the Plate	Taxa	No. of specimens in Chahmedu section	No. of specimens in Chahderaz section	Taxon Code in Tab.2
x	<i>Acanthocythereis dunelmensis</i>	252	-	1
w	<i>Actinocythereis rosefieldensis</i>	268	-	2
l	<i>Argilloecia</i> sp.	140	-	3
k	<i>Argilloecia triangularis</i>	104	-	4
t	<i>Aurila</i> sp.	376	-	5
i-j	<i>Australoecia posterocurua</i>	148	208	6
g-h	<i>Bairdoppilata</i> sp.	124	108	7
v	<i>Buntonia</i> sp.	184	176	8
q	<i>Costa</i> sp.	332	-	9
p	<i>Costa tricostata</i>	284	-	10
o	<i>Euxinocythere quadricostata</i>	138	-	11
z	<i>Hermanites rectangularis</i>	288	376	12
m	<i>Krithe</i> sp.	496	580	13
n	<i>Krithe trinidadensis</i>	344	-	14
y	<i>Legitimocythere</i> sp.	332	156	15
u	<i>Mutilus fortireticulata</i>	276	140	16
d-e	<i>Neonesidea gerda</i>	188	-	17
s	<i>Pokornyella italica</i>	228	244	18
r	<i>Procythereis deformis</i>	292	228	19
f	<i>Xestoleberis vicksburgensis</i>	152	184	20
a	<i>Cytherella dissimilis</i>	304	140	21
b	<i>Cytherella</i> sp.	508	552	22
c	<i>Cytherelloidea</i> sp.	156	204	23

Class Crustacea (Brünnich, 1772)
 Subclass Ostracoda (Latreille, 1803)
 Order Podocopida (Sars, 1866)
 Suborder Podocopina Sars, (Sars, 1866)
 Family Trachyleberididae (Sylvester-Bradley,
 1948)
 Subfamily Trachyleberidinae (Sylvester-Bradley,
 1948)
 Genus *Acanthocythereis* (Howe, 1963)
Acanthocythereis dunelmensis (Norman, 1865)
 Plate 1, Fig. x

Materials: 252 carapaces.

Remarks: Carapace is sub-rectangular and the left valve is slightly larger than the right one in lateral view, posterior and anterior ends are rounded but the anterior area is wider than the posterior area. The anterior dorsal cardinal angle is slightly more pronounced in the left valve. Valves are highly ornamented by reticulate ridges and conical spines in junctions. Spines are fewer, coarser and node like in males and finer and more in females. The dorsal margin is straight, the ventral margin is concave in males and straight in females. The medium length of the carapace is 0.63-1.0 mm and the medium height is 0.3- 0.6 mm.

Genus *Actinocythereis* (Puri, 1953)
Actinocythereis rosefieldensis (Howe and Law,
 1936)
 Plate 1, Fig. w

Materials: 268 carapaces.

Remarks: Carapace is trapezoidal to sub-rectangular in lateral view, thick, pockmarked with coarse and huge nodes especially in anterior and ventral margin. Nodes in posterior and dorsal margin are finer. The anterior is rounded and slightly extended upward; the posterior is rounded but lower than anterior area. The dorsal margin is straight; the ventral margin is straight or slightly sinusoidal. The medium length of carapace = 0.45-0.9 mm and the medium height = 0.22-0.5 mm.

Genus *Legitimocythere* (Coles and Whatley, 1989)
Legitimocythere sp.
 Plate: 1, Fig. y

Materials: 488 carapaces.

Remarks: Carapace is trapezoidal and elongated, voluminous in the central zone and ornamented with irregular and sporadic nodes, which are coarser in the center and finer in the marginal area. Anterior is rounded and posterior is pointed. The ventral margin is slightly convex and has inclined to the

posterior. The dorsal margin is straight. The medium length = 0.6-0.8 mm and the medium height = 0.4-0.5mm

Genus *Hermanites* (Puri, 1953)
Hermanites rectangularis (Ruggieri, 1962)
 Plate: 1, Fig. z

Materials: 664 carapaces.

Remarks: The carapace is sub-rectangular to trapezoidal in lateral view and equivalve, voluminous in the central area. Valves ornamented with honeycomb like reticulation. A distinctive node is located at the center of valves. Two smaller and semi-conical nodes are present at antro-dorsal and postero-dorsal angles. A tiny ala is located at the ventral margin in posterior half. The anterior end is broadly rounded and extended upwards with moderate high anterior margin rim. The posterior end is rectangular. Greatest height passing through the anterior cardinal angle. The ventral margin is straight; the dorsal margin is straight and inclined to the posterior end. The medium length of the carapace = 0.6-0.9 mm and the medium height = 0.4-0.55mm.

Genus *Costa* (Neviani, 1928)
Costa tricostata (Reuss, 1850; Ruggieri, 1992)
 Plate 1, Fig. p

Materials: 284 carapaces.

Remarks: This species has a sub-rectangular carapace with rough tegminate reticulate ornamentation. The dorsal margin has a conspicuous ala. A central nude and tow ridges are present on each valve. The posterior end is characterized by a pointed tail like appendage. The anterior margin has a crescent like keel on both valves. Dorsal and ventral margins nearly straight and converging towards the obtuse posterior end. The left valve is slightly larger than the right one. The medium length of carapace 0.65-0.95 mm and the medium height= 0.36-0.4 mm.

Subfamily Buntoninae (Apostolescu, 1961)
 Genus *Buntonia*, (Howe and Chambers, 1935)
Buntonia sp.
 Plate 1, Fig. v

Materials: 360 carapaces.

Remarks: The carapace is pear-shaped, greatest height anteriorly, maximum width posterior. Ornamented by a framework of ridges. The central area of valves is almost smooth and just small sporadic pits are present. The left valve is larger

than the right one. The anterior end is regularly rounded but the posterior end is pointed. The dorsal margin is convex in both of male and female forms. The ventral margin is straight in males, but in females it is slightly convex and a lobe-like turgidity is present in both of left and right valves. The length of carapace is 0.75-1.0 mm, the height ~ 1/2 length.

Family Pontocyprididae (Müller, 1894)

Genus *Argilloecia* (Sars, 1866)

Argilloecia triangularis (Dall'Antonia, 2003b)

Plate: 1, Fig. k

Materials: 104 carapaces.

Remarks: This species has a moderately thick, smooth and elongate carapace, dorsal and ventral margins are parallel in right valve and concave-convex in the left valve. The posterior end is pointed and slightly truncated, but the anterior end is rounded. The right valve is larger than the left valve and overlies it in ventral margin. This species is medium to large sized (0.75 – 2.0 mm)

Argilloecia sp.

Plate: 1, Fig. l

Materials: 140 carapaces.

Remarks: the carapace is elongated and fusiform, not ornamented and equivalve. The anterior margin is highly rounded and the posterior end is strongly pointed. The dorsal margin is broadly convex; the ventral margin is straight in the middle, but it has inclined upward in anterior and posterior end. The medium length = 0.8-1.1mm and the height ~ 1/3 lent.

Genus *Australoecia* (McKenzie, 1967)

Australoecia posterocurua (Barra & Bonaduce, 2001)

Plate: 1, Fig. i-j

Materials: 356 carapaces.

Remarks: The carapace is large, ovate to droplet like. Compacted in posterior half, voluminous in anterior area, the anterior end is broadly rounded, the posterior end is pointed. The dorsal margin is domelike and concave, the ventral margin is sinusoidal, convex in the anterior half and convex in the posterior half. The lent of male carapaces is larger than the females. The female carapaces are 1/3 length of males.

Genus *Xestoleberis* (Sars, 1866)

Xestoleberis vicksburgensis (Howe and Law, 1936)

Plate: 1, Fig. f

Materials: 336 carapaces.

Remarks: The carapace is sub-ovate in lateral view. The dorsal margin is highly convex, the ventral margin is sinuous. It is slightly convex in posterior half and concaves in the anterior half; the anterior margin is narrowly rounded and extends downward; the posterior margin is broadly rounded. The left valve is larger than the right one, surface of the carapace is smooth and normal pores in part with cribrate sieve plates are present. This species is medium to large sized, the length of carapace = 0.8-1.8 mm and the height ~1/2 length.

Family Cytheridae, (Baird, 1850)

Subfamily Leptocytherinae, (Hanai, 1957)

Genus *Euxinocythere* (Stancheva, 1968)

Euxinocythere quadricostata (Pipik & Bodergat, 2004)

Plate: 2, Fig. o

Materials: 138 carapaces.

Remarks: The carapace is sub-rectangular and equivalve, ornamented by reticulate ridges which are finer and honeycomb like in marginal area and coarser and irregular in the central area. The anterior end is regularly rounded and has extended downwards. The posterior end is irregularly rounded and slightly sinusoidal. The dorsal margin is straight and gently has inclined to the posterior end. The ventral margin is slightly convex with maximum hollowness in the mid length. The medium length = 0.7-0.9mm and the height ~ 1/3 length.

Family Krithidae, (Mandelstam, 1958)

Subfamily Krithinae, (Mandelstam, 1958)

Genus *Krithe* (Brady et al., 1874)

Krithe sp.

Plate 1, Fig. 13

Materials: 1076 carapaces.

Remarks: The carapace is parabolic and elongated in lateral view, cylindrical in general and has ornamented with irregular elongated sporadic pits. The anterior end is parabolic, rounded and has slightly extended upwards. The posterior is pointed and has inclined downwards. The ventral margin is straight to slightly concave. The dorsal margin is straight in mid length of the carapace, highly inclined downward to posterior end and slightly inclined upward to the anterior end. The length of carapace = 0.7-1.2mm and the height ~1/3 length.

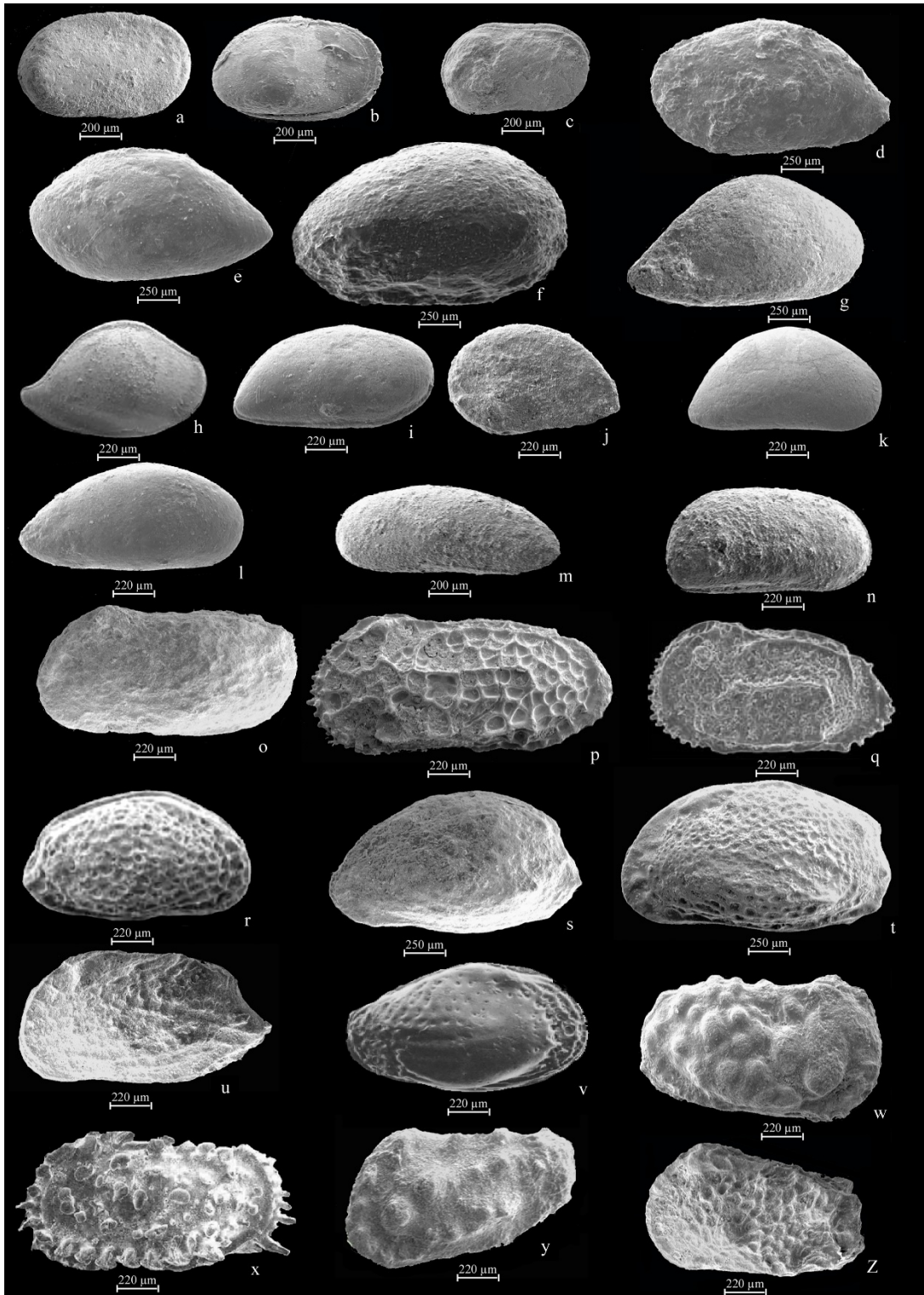


Plate 1. a: *Cytherella dissimilis*, carapace, right lateral view; b: *Cytherella* sp., carapace, right lateral view; c: *Cytherelloidea* sp., carapace, right lateral view; d,e: *Neonesidea gerda*, carapace, left lateral view; f: *Xestoleberis vicksburgensis*, carapace, right lateral view; g,h: *Bairdoppilata* sp., carapace, right lateral view, g, female; h, male; i,j: *Australoecia posterocurva*, i, right lateral view of male, j, left lateral view of female; k: *Argilloecia triangularis*, carapace, right lateral view; l: *Argilloecia* sp., carapace, right lateral view; m: *Krithe* sp., carapace, left lateral view; n: *Krithe trinidadensis*, carapace, right lateral view; o: *Euxinocythere quadricostata*, carapace, left lateral view; p: *Costa tricostata*, carapace, left lateral view; q: *Costa* sp., carapace, left lateral view; r: *Procythereis*

deformis, carapace, right lateral view; s: *Pokornyyella italica*, carapace, left lateral view; t: *Aurila* sp., carapace, left lateral view; u: *Mutilus fortireticulata*, carapace, left lateral view; v: *Buntonia* sp., carapace, right lateral view; w: *Actinocythereis rosefeldensis*, carapace, right lateral view; x: *Acanthocythereis dunelmensis*, carapace, left lateral view; y: *Legitimocythere* sp., carapace, left lateral view; z: *Hermanites rectangularis*, carapace, left lateral view.

Krithe trinidadensis (Van den Bold, 1958)

Plate: 1, Fig. n

Materials: 334 carapaces.

Remarks: The carapace is elliptical to parabolic and non-ornamented, valves are equal, but in the ventral margin, the left valve is more projected than the right valve. The anterior end is regularly rounded but the posterior end is pointed and inclines downward. In both male and females, the dorsal margin is slightly convex. The ventral margin is straight in males and slightly convex in females. The length of carapace = 0.7-1.2mm and the height = 0.2-0.35mm.

Family Hemicysteridae, (Puri, 1954)

Genus *Pokornyyella*, (Oertli, 1956)

Pokornyyella italic, (Ruggieri et al., 1977)

Plate: 1, Fig. s

Materials: 472 carapaces.

Remarks: This species has a dome-like and sub-ovate carapace, ornamented with irregular pits and ala like spines near the ventral margin. The carapace is too voluminous in dorso-central area. In females, the voluminous body is larger and carapace becomes chubby or belly. The anterior is rounded parabolically and extended to the ventral margin. The posterior end is pointed and sinusoidal. The ventral margin is sinusoidal, convex in mid length and concave in posterior and anterior areas. The dorsal margin is convex and dome-like. The length of carapace = 0.7-1.1 mm and the height = 0.6-0.9mm.

Subfamily Hemicysterinae, (Puri, 1954)

Genus *Procythereis*, (Skogsberg, 1928)

Procythereis deformis, (Reuss, 1850; Van den Bold, 1965)

Plate: 1, Fig. r

Materials: 520 carapaces.

Remarks: The carapace is ovate to ovate-subrectangular, plump and ornamented with pits and small and irregular nodes. There are two projected nodes located at the antro-dorsal and postero-dorsal angles and another distinct node located at the postero-ventral angle. The anterior is rounded, extended and inclines downward. The posterior end is pointed and sinusoidal. The ventral margin is sinusoidal; the dorsal margin is straight to

slightly concave. The left valve is larger than the right one and overlaps the right valve in dorsal margin. The length of carapace = 0.6-0.9 mm and the height = 0.2-0.35mm.

Genus *Mutilus* (Neviani, 1928)

Mutilus fortireticulata (Khalaf, 1988)

Plate: 1, Fig. u

Materials: 416 carapaces.

Remarks: The carapace is elliptical to subquadrate in lateral view, inflated ventrally with ventro-lateral prolongation. The anterior area is rounded; the posterior margin is narrower, concave in the upper part and ending postero-ventrally in a short truncate caudal process. The dorsal margin is slightly convex in the left valve and straight in the right valve. The ventral outer margin is slightly concave. Posterior dorsal cardinal angle conspicuous and nearly 90°. Four concentric ridges in the anterior area characterize this species. The length of carapace = 0.7-1.1mm and the height ~ ½ length.

Genus *Aurila*, (Pokorný, 1955)

Aurila sp.

Plate: 1, Fig. t

Materials: 376 carapaces.

Remarks: This species has an ovate carapace that is chubby in ventral margin. The carapace ornamented with reticulated ridges. The anterior end is rounded and extended downwards; the posterior end is pointed, rectangular and scattered. The dorsal margin is dome-like and the ventral margin is sinusoidal. The length of carapace = 0.8-1.2mm and the height ~ ½ length.

Superfamily Bairdiacea (Sars, 1866)

Family Bairdiidae (Sars, 1866)

Genus *Bairdoppilata* (Coryell et al., 1935)

Bairdoppilata sp.

Plate: 1, Fig. g-h

Materials: 232 carapaces.

Remarks: The carapace is huge, bairdoid and subtriangular, smooth or finely punctuate in lateral view. The left valve is larger than the right valve, often resulting a pronouncedly different outline of the dorsal margin in the right and left valves. Posterior end is boat-shaped and anterior end is rounded. The medium length of the carapace is 0.8-

1.5mm and the height $\sim \frac{1}{2}$ length.

Genus *Neonesidea* (Maddocks, 1969)
Neonesidea gerda (Benson & Coleman, 1963;
 Maddocks, 1969)
 Plate: 1, Fig. d-e

Materials: 188 carapaces.

Remarks: The carapace is semi bairdoid, equivalve and smooth, valves are voluminous in central area and slightly compacted in anterior and posterior ends. Anterior regularly rounded, posterior severely pointed. The dorsal margin is convex and dome-like, inclines to the posterior end. The ventral margin is straight, pushed upward at posterior and anterior terminals. The medium length of the carapace is 0.7- 1.3 and the height $\sim \frac{1}{2}$ length.

Order Platycoptida, (Sars, 1866)
 Suborder Platycopta (Sars, 1866)
 Family Cytherellidae (Sars, 1866)
 Genus *Cytherella* (Jones, 1849)
Cytherella dissimilis (Donze, 1965)
 Plate: 1, Fig. a

Materials: 444 carapaces.

Remarks: The carapace is sub-rectangular in males and elliptical in females. The dorsal and ventral margins are concave. The surface of the carapace is smooth. The posterior area is thicker than the anterior area. The medium length of the carapace is 0.5- 0.9 and the height = 0.35-0.6mm.

Cytherella sp.
 Plate: 1, Fig. b

Materials: 1060 carapaces.

Remarks: The carapace is elliptical. The left valve is larger than the right one and overlays the right one especially in anterior and ventral margins. The dorsal margin in both valves is convex, but slightly higher in the left one. The ventral margin of the right valve is sinusoidal, but in the left valve is convex. In the right valve of the females, the posterior half is voluminous than the anterior half. The anterior end is regularly rounded; the posterior end is rounded and inclines downward. The medium length of the carapace is 0.6- 0.9 and the height = 0.35-0.6mm.

Genus *Cytherelloidea* (Alexander, 1929)
Cytherelloidea sp.
 Plate: 1, Fig. c

Materials: 360 carapaces.

Diagnosis: The carapace is elliptical, elongated and

non-ornamented. The left valve is larger than the right one and overlays the right one especially in antero-dorsal and postero-dorsal margins. The Posterior and anterior ends are regularly rounded. The dorsal margin is straight in both of male and females. The ventral margin is straight in males and convex in females. The posterior half is voluminous in females. The medium length of the carapace is 0.4- 0.8 and the height = 0.36-0.45mm.

The identified ostracoda and their abundance in Chahmedu section represented in figure 3. The figure 4 also shows the recovered ostracoda and their abundance in Chahderaz section.

Palaeoecology

Ostracoda have long been known to be useful tools as indicators of fluctuation in the environment, such as salinity, depth, substrate, nutrient level, ventilation and temperature changes (Matzke-Karasz *et al.*, 2005). They found in fresh, brackish and marine waters and have adapted to live in very narrow ecological niches throughout the geologic time, therefore, they are highly sensitive to fluctuations in environmental factors (Matzke-Karasz *et al.*, 2005; Matzke-Karasz *et al.*, 2007). Ostracoda have been used for paleoecological interpretations in different environments by many researchers (Gross, 2004, 2008; Mazzini, 2005; Matzke-Karasz *et al.*, 2005; Matzke-Karasz *et al.*, 2007; Reeves *et al.*, 2007; Irizuki *et al.*, 2009). In this study, the identified ostracods are classified into seven morphogroups, based on their carapace characteristics (Tab. 2), (Fig. 5). In this classification 90% of similarity between the taxa is emphasized (Elewa, 2004). The morphogroups, their taxa, and also their favorable ecologic environment is summarized in table 3.

The identified platycopid ostracods, *Cytherella* and *Cytherelloidea*, are included in the morphogroup no.1. These forms are common in marine environments as auxiliary members. The most conspicuous character of them is their ability to live in low oxygenated waters. This ability is due to their feeding and reproduction strategies, which makes them as the most resistant ostracods in non-ventilated waters (Whatley & Maybury 1990; Whatley, 1991). The morphogroup no. 2 comprises *Xestoleberis*, *Neonesidea* and *Bairdoppilata*. These genera are able to survive in wide ecological niches, but they are flourished in oligotrophic to mesotrophic zones in moderately shallow waters at coarse-grained substrate (Kondo *et al.*, 2005; Sato & Kamiya 2006).

Table 2. The data matrix of similarities in the studied ostracodes, which used for R-mode clustering analyses.

Taxon Code	Order		Valves										Carapace general shape					Surface		Ornaments							
	Platycopida	Podocopida	Equivalve	Unequivale	Elongate	Trapezoidal	Spherical	Elliptical	Ovate	Sub rectangular	Rectangular	Quadrangle	Tri angular	Pointed	Ornamented	Non ornamented	Ridges	Ala	Nodes	Spines	Reticulate	Honeycomb	Belly	Tubercles	Pits		
1	0	1	1	0	1	1	0	0	0	0	0	0	0	1	0	0	0	0	1	0	0	1	1	0			
2	0	1	1	0	1	1	0	0	0	0	0	0	0	1	0	0	0	1	1	0	0	1	0	0			
3	0	1	0	1	1	0	0	1	0	0	0	0	0	0	0	0	0	0	0	0	0	0	0	0			
4	0	1	0	1	1	0	0	1	0	0	0	0	0	0	0	0	0	0	0	0	0	0	0	0			
5	0	1	1	0	0	0	0	0	1	0	0	0	0	1	0	0	0	0	1	1	0	0	1	0			
6	0	1	0	1	1	0	0	1	0	0	0	0	1	0	1	0	0	0	0	0	0	0	0	0			
7	0	1	0	1	0	0	1	1	1	0	0	0	1	0	1	0	0	0	0	0	0	0	0	0			
8	0	1	1	0	0	0	0	0	1	0	0	0	1	1	0	0	0	0	0	1	1	0	0	1			
9	0	1	1	0	0	1	0	0	0	1	1	0	0	1	0	1	1	0	0	1	1	0	0	1			
10	0	1	1	0	0	1	0	0	0	1	1	0	0	1	0	1	1	0	0	1	1	0	0	1			
11	0	1	1	0	1	0	0	1	0	0	0	0	0	0	1	0	0	0	0	0	0	0	0	0			
12	0	1	1	0	0	1	0	0	0	1	0	0	0	1	0	1	1	1	0	1	0	0	0	0			
13	0	1	0	1	1	0	0	0	0	0	0	0	1	0	0	0	0	0	0	0	0	0	0	0			
14	0	1	0	1	1	0	0	0	0	0	0	0	1	0	0	0	0	0	0	0	0	0	0	0			
15	0	1	1	0	0	1	0	0	0	1	0	0	0	1	0	0	0	1	1	0	0	0	0	0			
16	0	1	1	0	0	0	0	0	1	0	0	0	1	1	0	0	1	0	1	0	0	1	0	0			
17	0	1	0	1	0	0	0	0	1	0	0	0	1	0	1	0	0	0	0	0	0	0	0	0			
18	0	1	1	0	0	0	0	0	1	0	0	0	1	1	0	0	1	0	1	0	0	1	0	0			
19	0	1	1	0	0	0	0	0	1	0	0	0	0	1	0	0	0	1	1	1	0	0	0	1			
20	0	1	0	1	0	0	1	0	1	0	0	0	1	0	1	0	0	0	0	0	0	0	0	0			
21	1	0	1	0	0	0	0	1	0	0	0	0	0	0	0	0	0	0	0	0	0	0	0	0			
22	1	0	1	0	0	0	0	1	0	0	0	0	0	0	0	0	0	0	0	0	0	0	0	0			
23	1	0	1	0	0	0	0	1	0	1	0	0	0	0	0	0	0	0	0	0	0	0	0	0			

Table 3. Ostracoda morphogroups and their morphological and ecological characteristics.

Morphogroup	Genus	Morphological characteristics	Ecology
1	<i>Cytherella</i> <i>Cytherelloidea</i>	Elliptical to sub-rectangular and unornamented	Predominant in relatively harsh and poorly ventilated basins.
2	<i>Xestoleberis</i> <i>Neoneside</i> <i>Bairdoppilata</i>	Spherical to elliptical unornamented with large carapace	Living in oligotrophic to mesotrophic zones at coarse-grained substrate in moderately shallow waters
3	<i>Krith</i> <i>Australoecia</i> <i>Argilloecia</i>	Elongated and pointed, triangular to droplet like in lateral view, unornamented,	Flourishing at fine grained and relatively hard substrates in relatively deep waters
4	<i>Euxinocythere</i> <i>quadricostata</i>	Sub-rectangular in lateral view, voluminous in posterior half, ornamented by pits and fine marginal ridges.	Living in fresh to brackish and shallow waters in intermountain basins
5	<i>Costa</i>	Sub-rectangular, ornamented with irregular pits and ala like ridges	Dominant at soft and fine grained substrate; in nutrient rich and saline environments of moderately deep waters
6	<i>Mutilus</i> <i>Pokornyell</i> <i>Procythereis</i> <i>Buntonia</i> <i>Aurila</i>	Ovate to elliptical, ornamented by various sized pits, and an ala like ridge parallel to the ventral margin which ends to a short spine	Flourishing at soft, medium to coarse-grained substrates in the normal saline and nutrient rich environments near and in the back of reefal environments
7	<i>Actinocythereis</i> <i>Acanthocythereis</i> <i>Legitimocythere</i> <i>Hermanites</i>	Trapezoidal in lateral view, ornamented by various sized spines, nodes and tubercles	Predominant at fine-grained, relatively hard and nutrient rich substrate of relatively deep waters

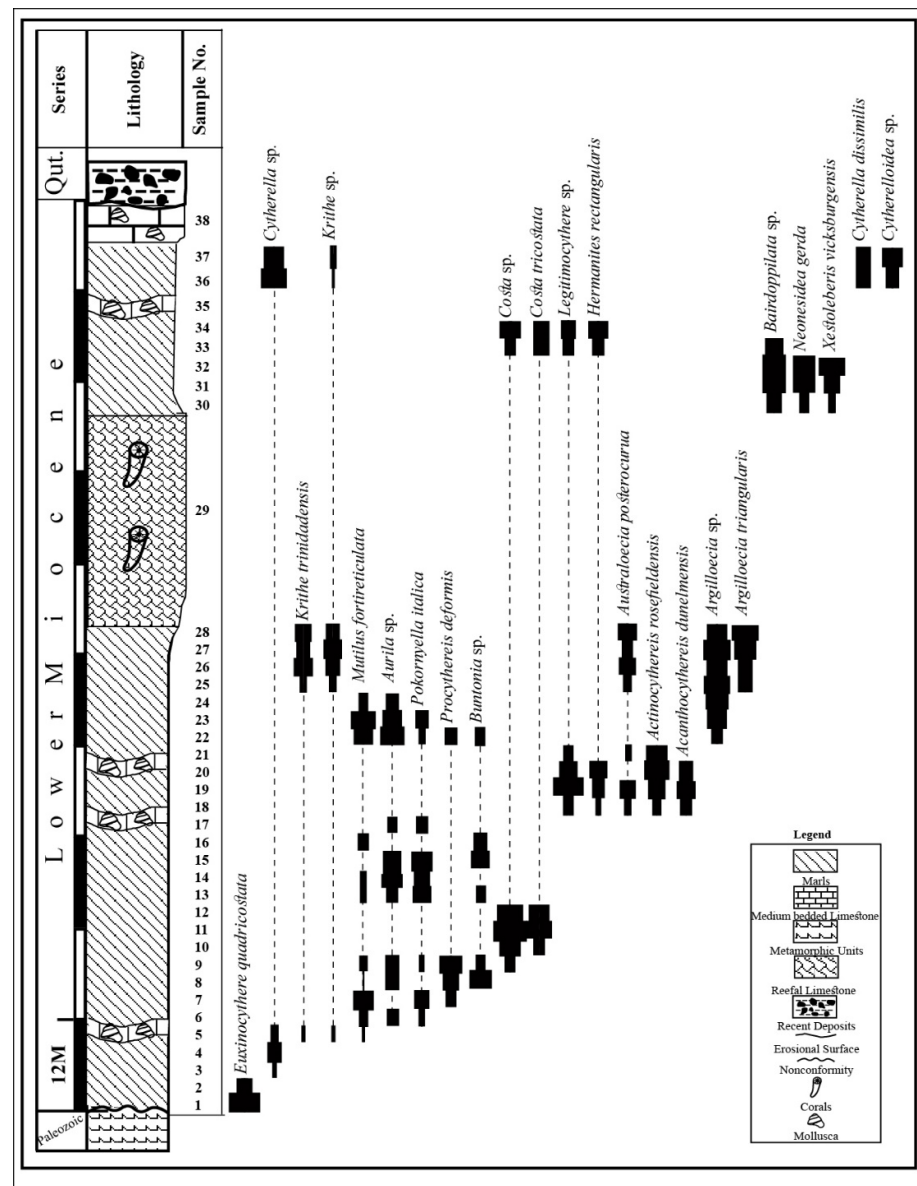


Figure 3. Stratigraphic column and the range chart of the ostracoda in the Chahmedu section.

These genera are able to survive in wide ecological niches, but they are flourished in oligotrophic to mesotrophic zones in moderately shallow waters at coarse-grained substrate (Kondo *et al.*, 2005; Sato & Kamiya 2006).

The morphogroup no.3 includes genera *Krithe*, *Australoecia* and *Argilloecia*. These genera adapted to living at fine grained and moderately hard substrates in relatively deeper parts of the environment (Zhao & Whatley 1997; Sartori & Coimbra 2010).

The morphogroup no.4 includes only taxon

Euxinocythere quadricostata, this species is reported from fresh to brackish and shallow waters from intermountain basins (Pipik & Bodergat 2004).

The morphogroup no. 5 consists only of genus *Costa*. This morphogroup is dominant at soft and fine grained substrate in nutrient rich and saline waters in moderately deeper parts of marine environments (Van den Bold, 1970; Dall'Antonia, 2003a, b).

The morphogroup no. 6 includes genera *Mutilus*, *Pokornyyella*, *Procythereis*, *Buntonia* and *Aurila*.

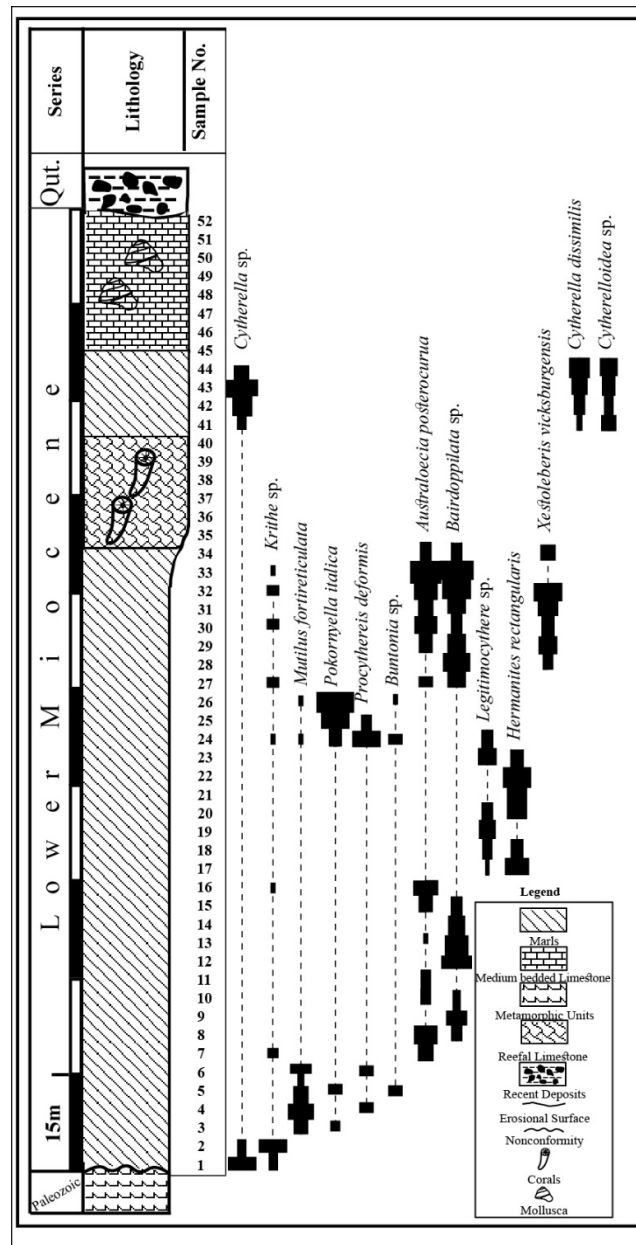


Figure 4. Stratigraphic column and range chart of the ostracoda in the Chahderaz section.

This morphogroup is common in the studied area and present in most of the samples. The individuals of this morphogroup flourish at soft, medium to coarse-grained substrates in the normal saline and nutrient rich environments, especially near and in the back of reefal environments (Van den Bold, 1967, 1972; Wouters, 1973; Bonaduce *et al.*, 1987). The morphogroup no. 7 consists essentially of genera *Actinocythereis*, *Acanthocythereis*, *Legitimocythere* and *Hermanites*. These taxa are common in various depths, but the substrate is the

main ecological factor which affects their proliferation (Moore, 1961). These genera prefer to live at fine-grained, relatively hard and nutrient rich substrate in relatively deeper parts of marine environments (Khalaf, 1989; Ozawa and Kamiya, 2001; Mostafawi *et al.*, 2005; Yamada *et al.*, 2005).

Discussion

In general, ostracodal biostratigraphy is not as much detailed as those based on foraminifera, due to their great sensitivity to ecological factors that

control their distribution. However, based on some previous studies (Van Morkhoven, 1963; Bhatia, 1984; Khalaf, 1984; Pipik & Bodergat, 2004; Guernet, 2005; Ayress, 2006; Babinot *et al.*, 2007), the stratigraphic range of the identified ostracoda in the studied sections is summarized in Fig. 6.

The Lower Miocene strata in Kerman province

have received many attentions in recent years and their benthonic foraminifera content has been studied in detail (Hosseinipour, 2004; Hassani, 2012; Mohammadi, 2014). The, studied sections show a low diversity fauna both in foraminifera and ostracod assemblages.

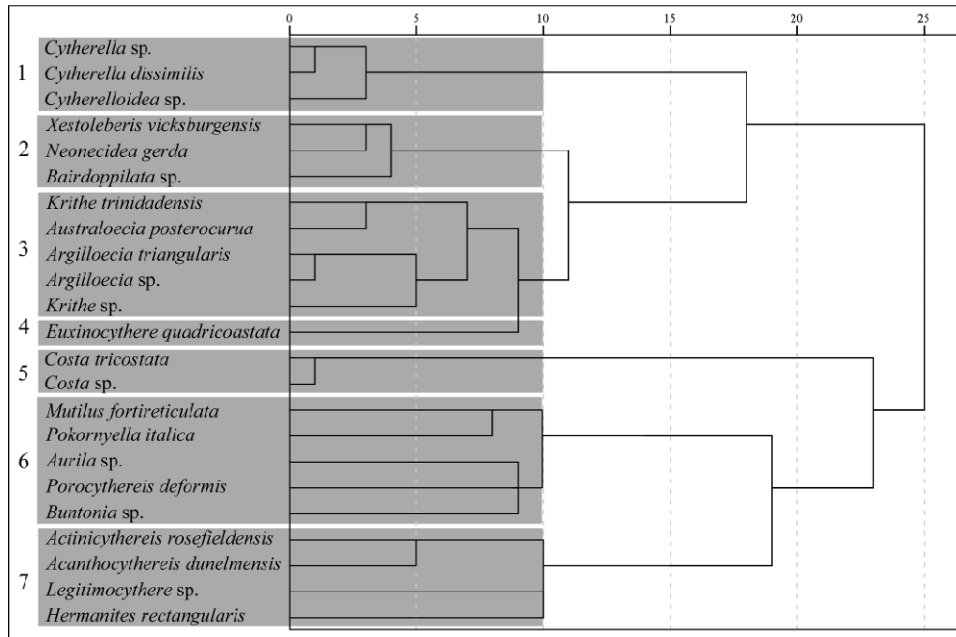


Figure 5. The cluster diagram resulted from R-mode analysis and identified morphogroups of recovered ostracoda.

Taxon	Paleocene		Eocene		Oligocene		Miocene		Pliocene		Pleistocene	Holocene/Recent
	E	L	E	M	E	L	E	M	E	L		
<i>Acanthocythereis dunelmensis</i>												
<i>Actinocythereis rosefieldensis</i>												
<i>Argilloecia sp.</i>												
<i>Argilloecia triangularis</i>												
<i>Aurila sp.</i>												
<i>Australoecia posterocurva</i>												
<i>Bairdoppilata sp.</i>												
<i>Buntonia sp.</i>												
<i>Costa sp.</i>												
<i>Costa tricostata</i>												
<i>Cytherella dissimilis</i>												
<i>Cytherella sp.</i>												
<i>Cytherelloidea sp.</i>												
<i>Euxinocythere quadricostata</i>												
<i>Hermanites rectangularis</i>												
<i>Krithe sp.</i>												
<i>Krithe trinidadensis</i>												
<i>Legitimocythere sp.</i>												
<i>Mutilus fortireticulata</i>												
<i>Neonecidea gerda</i>												
<i>Pokorniyella italica</i>												
<i>Porocythereis deformis</i>												
<i>Xestoleberis vicksburgensis</i>												

Figure 6. The stratigraphic distribution of the identified ostracoda.

Based on rare individuals of Early Miocene benthic foraminifera such as *Borelis pygmaea*, *Borelis melo curdica*, *Austrotrillina howchini*, *Rotalia viennoti*, *Miogypsina* spp., *Miogypsinoidea* spp. and *Elphidium* spp. a Lower Miocene age has been assigned to the studied sections.

The distribution of morphogroups, their fluctuations, and also simple diversity of ostracods through the Chahmedu section is shown in Fig. 7.

As it is shown, the basal part of this section only contains morphogroup no. 4. Therefore, it seems that in the initiating stage of basin evolution, fresh to brackish intermountain water bodies are formed by the intrusion of fresh and marine waters to the valleys in the northern parts of the Sirjan Basin. In the next step, the occurrence of the morphogroup 1 in the lower part of the section indicates the low ventilated waters. This condition is common, happens in almost all young shallow restricted basins, and indicates weak connection with oceanic waters (Kumar & Kumar-Saraswati, 1977). In the next step, the appearance of morphogroups no. 3, 5, 6 and 7 indicates the deepening of the sedimentary basin and relatively normal marine condition, which

is accompanied by the increase in faunal enrichment. In this part of the section, the coarse substrate is changed into relatively fine-grained sandy/muddy floor, several micro and macro-fauna occurred in the ecosystem and the trophic level is shifted to oligotrophic conditions. Several fossiliferous, benthic foraminifera bearing, argillaceous limestone intercalations are recorded in this part of the section. The high abundance of some larger benthic foraminifera (15-20 individuals per each thin section) such as large lepidocyclinidae, *Heterostegina* and *Operculina* confirms the depth increment and also oligotrophic conditions (BouDagher-Fadel, 2008). The next phase of the basin evolution characterized by the occurrence of a massive reefal limestone, this reefal limestone interval mainly consists of hermatypic scleractinian corals such as *Favites*, *Dichocoenia*, *Leptoria* and *Leptoseria*. This facies indicates a shallow basin with moderately warm and saline waters in subtropical altitude (Bosellini & Perrin, 2008). The reefal limestone interval topped with a thick marly interval, which is divided into two parts by a fossiliferous limestone horizon.

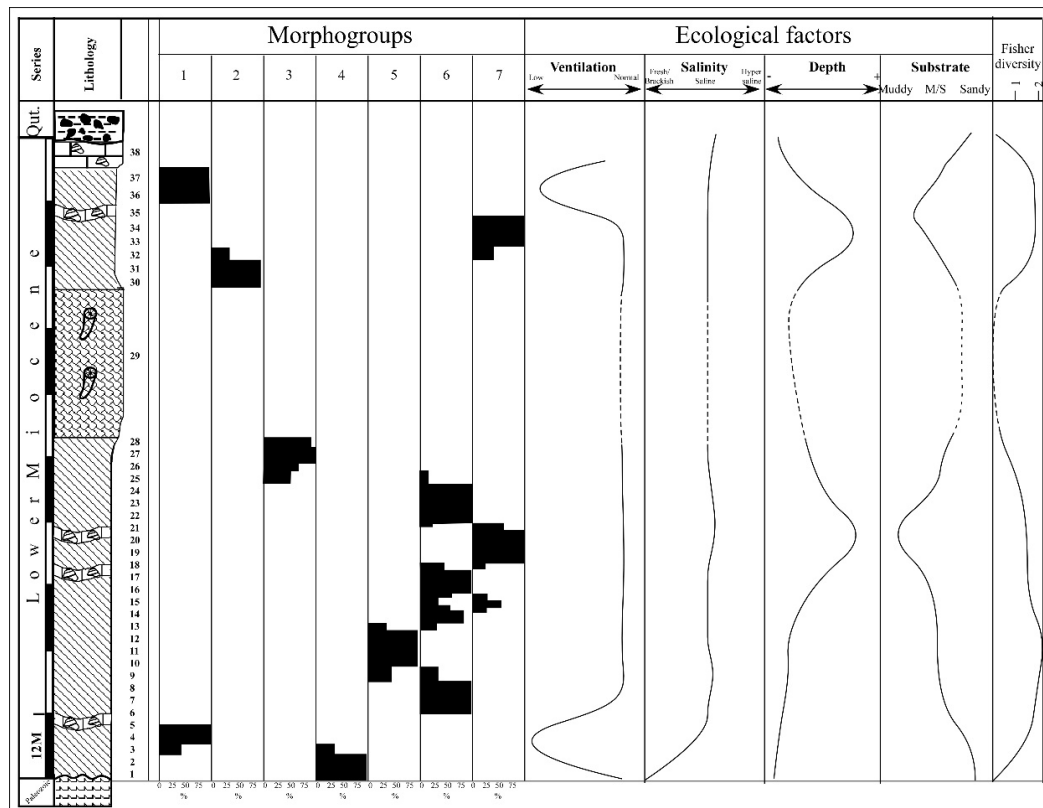


Figure 7. Distribution of morphogroups, ecological factors and diversity changes through the Chahmedu section.

The presence of morphogroups 2 and 7 in the lower part indicates the depth increment and increase in mud content in the substrate. The morphogroup 1, which is recorded in the upper part indicates weak ventilation. This condition may be caused by the sea level fall and probable disruption in basin connection to the oceanic waters. The Chahmedu section is topped with a thick limestone layer containing molluscan fauna, especially gastropods, and small intraclast particles. Introduced morphogroups, their distributional patterns and diversity fluctuations in Chahderaz section are shown in figure 8. In general, the lithology of the Chahderaz section is similar to Chahmedu section. The only differences between these two sections is that the Chahderaz section is topped with a relatively thick (≈ 22 m) fossiliferous limestone interval, while the final part in the Chahmedu section is thinner (≈ 4 m). Besides, the fossiliferous marly limestone intercalations which exist in Chahmedu section are absent in Chahderaz section.

Like the Chahmedu section, basal marly strata are deposited in poorly ventilated waters. In the next step, the depth increased, the substrate changed

into fine grain sandy to muddy floor, various morphogroups appeared and trophic level shifted to oligotrophic condition. The presence of morphogroup no. 1 in the upper marly strata indicates a poor ventilated basin. In the Chahderaz section, uppermost limestone strata contain large intraclasts and relatively large bivalve shells which indicates a relatively long lived, shallow near tidal zone environment with abnormal salinity and relatively muddy substrate prevailed at the end of the basin's life.

Conclusion

The Lower Miocene deposits in Sirjan area, in compare with southern realm of the Oligo-Miocene basin in the Kerman Province, are younger and deposited during the Early Miocene while in the southern realm, the basin was born in the Oligocene (Hassani, 2012; Mohammadi, 2014). On the other hand, in the Sirjan and adjacent areas, such as Balvard, Chahargonbad, Golegozar and Zardu, the Miocene marine strata are deposited on the Sanandaj – Sirjan Metamorphic Belt.

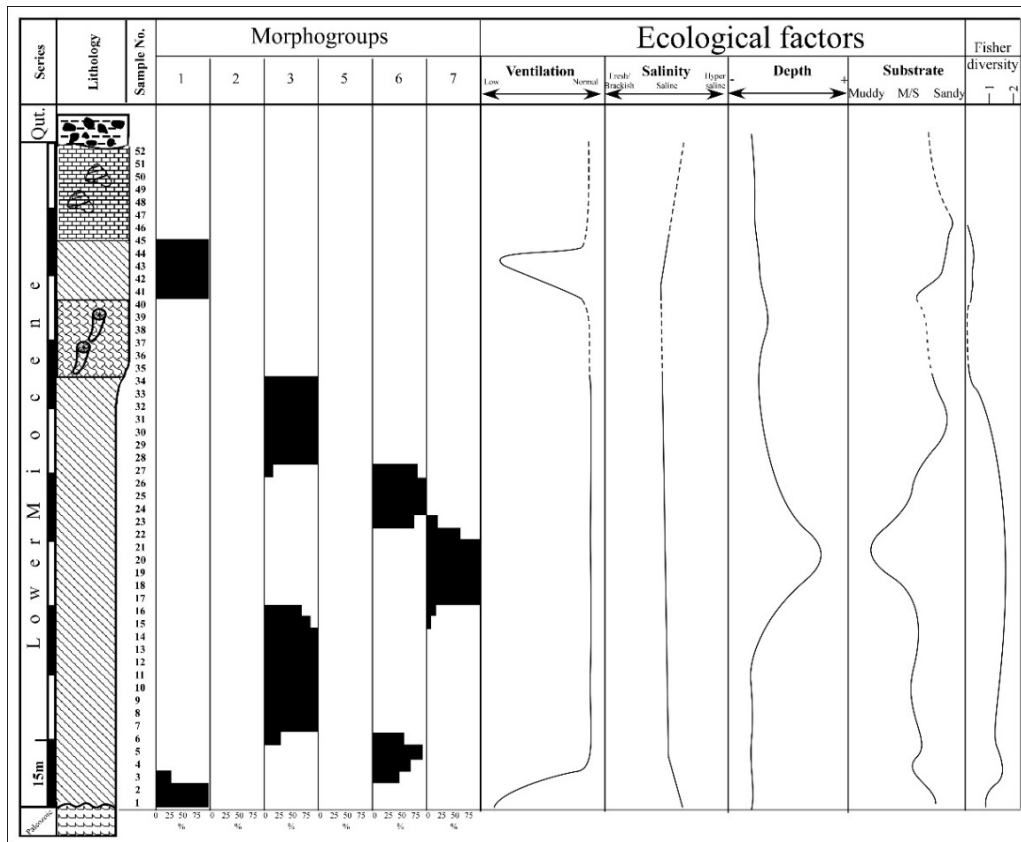


Figure 8. Distribution of morphogroups, ecological factors and diversity changes through the Chahderaz section.

This structural zone has been known as the most tectonically active zone of the Iranian plateau since the Late Paleozoic and affected by almost all of happened post Paleozoic structural events (Mohajjel *et al.*, 2003). During the Early Miocene, the vertical movements of active faults formed the main graben in the Sirjan region and the basin evolution is controlled by subsequent syndepositional activities of these faults. (Mohajjel *et al.*, 2003; Sarkarinejad *et al.*, 2008). As well as structural activities of the basement, the nature of the sedimentary environment affected by transporting sediments from the loose metamorphic rocks to the sea. This condition resulted in a harsh ecosystem that affected the aquatic communities (Westphal & Munnecke, 2003; Westphal, 2006). These instabilities were more common in the marginal parts than the central part of the Sirjan Basin (Hosseinipour, 2004; Hassani, 2012), therefore, the abundance and diversity of ostracoda in the studied sections (Figs. 7 & 8) are lower than central parts of the Sirjan and other southern adjacent areas (Torkzadeh *et al.*, 2011; Hassani, 2012). In comparison with other Tethyan and Indo-pacific realms, the ostracode community is less enriched (Guha, 1968; Dall'Antonia, 2003b; Irizuki *et al.*, 2004; Guernet, 2005; Irizuki *et al.*, 2009). It seems that the deposition of marly deposits in the basal parts of both sections resulted by the relatively rapid transfer of large amount of fine-grained terrigenous materials to the newborn shallow sedimentary environment. This situation resulted in a moderately stressful environment and the basin vacated from ecological sensitive creatures such as ostracods. On the other hand, vertical movements of faults may be responsible for the periodical restrictions by cutting the basin's connections with the open marine parts. The presence of massive reefal limestone interval in the mid-life of the basin points to the stable marine condition, which followed by the next period of instabilities. The morphogroup no.1, presented in the second marl interval of both sections, which are the most resistant taxa indicates that an unfavorable ecological condition, especially low ventilation level was prevailed during the deposition of these strata. In this part, similar to basal parts, the lack of planktonic fauna and relatively coarse-grained substrate rejects deepening of the basin (Figs. 7 and 8). Furthermore, the presence of morphogroup no. 1 maybe points to the dominance of a harsh environment such as poor nutrient content and low transparency. This is a common feature on marginal mixed siliciclastic-carbonate platforms

(Bassant *et al.*, 2005; Brandano *et al.*, 2009).

This condition is very sharp in the southern parts of the basin, the Chahderaz section, while in the northern realm, regarding the presence of morphogroups no. 2 and 7, it can be concluded that basal and middle parts of upper marl, are deposited in a relatively deeper waters than the southern realm. In these parts, the morphogroup no. 2 is recorded at the base, which is replaced by the morphogroup no. 7 upward. It seems that the increase in depth caused this replacement.

The depth increment is confirmed by the decrease of the substrate grain size in this part. Subsequent vertical movements disrupted the depth increment and a short period of stability, which is accompanied by the deposition of a thin layer of fossiliferous limestone, has been occurred. The upper part of the upper marl interval of Chahmedu section is quite similar to the upper marl interval of Chahderaz section. Both sections are terminated by a relatively dense fossiliferous limestone interval. Large-sized molluscan shells, along with coarse intraclasts and micritic matrix are the main characteristics of these strata (Fig. 9). Based on changes in the composition of ostracode community, it can be assumed that the depositional basin of the Lower Miocene deposits in both northern and southern flanks of the Sirjan Basin could be demonstrated as a relatively shallow marginal sea with prolonged branches in the valleys which is periodically separated from the oceanic waters by tectonically made buildups (Fig. 10).

In addition, it could be concluded that the distribution of ostracode morphogroups reflects several steps in the basin evolution history during the Early Miocene in the southern and northern margins of the Sirjan Basin. Each step is characterized by changes in depth, grain size and depth related ecological factors, which fundamentally effects the ostracode community.

These fluctuations in basin characteristics seems to be local and limited to the studied sections, because during the Early Miocene, no such fluctuations in the oceanic characteristics have been reported from central parts of the Sirjan and other adjacent basins (Hosseinipour *et al.*, 2010; Torkzadeh *et al.*, 2011; Hassani, 2012; Mohammadi, 2014). Finally it could be concluded that the structural activities of the Sanandaj – Sirjan Metamorphic Belt, as the basement of studied sections, could be assumed as the main cause of the changes during the evolution of the basin.

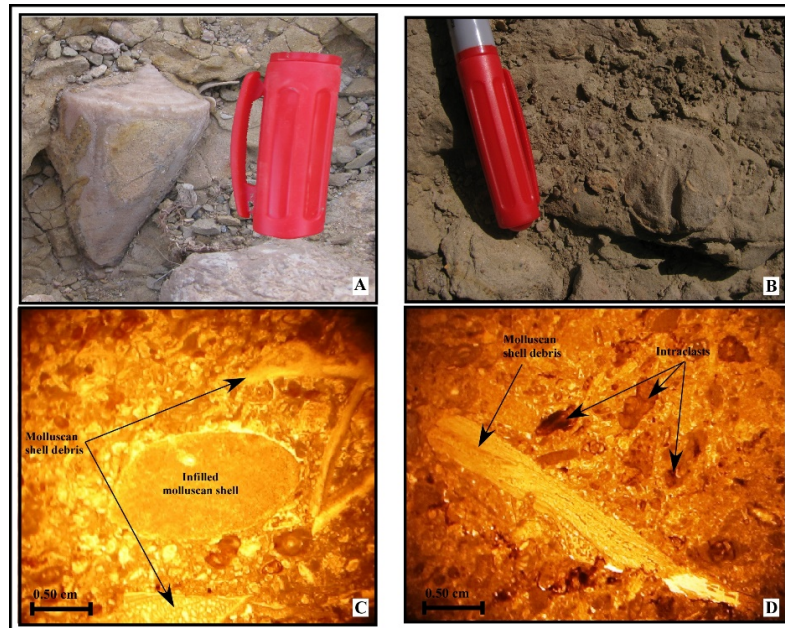


Figure 9. Outcrop exposure of a gastropod (A) and bivalves (B) in the uppermost limestone in the Chahmedu and Chahdrez sections; C & D, Bioclastic wackestone with Mollusca shell debris, final limestone strata of C, Chahmedu Section, D, Chahderaz Section.

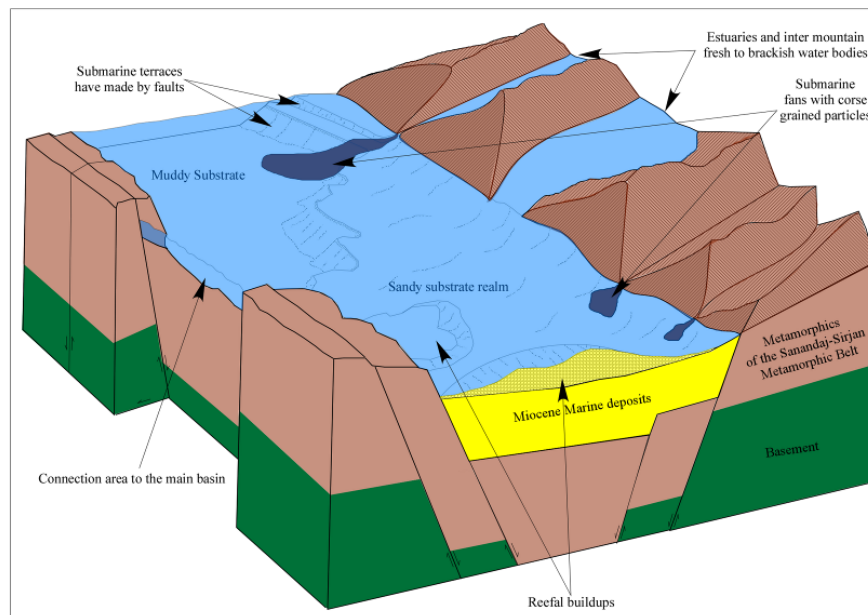


Figure 10. A conceptual block diagram of the marginal sea during the Lower Miocene in the northern and southern flanks of the Sirjan Basin.

Acknowledgments:

The Graduate University of Advanced Technology, project no. 7.394, supports this study. Special thanks to Dr. A. Lotfabad Arab (Shahid Bahonar Univ. of Kerman) for his valuable helps in identification of the fossils. Also, the authors

express a deep sense of gratitude to Prof. N. Moeinzadeh (Kerman Institute of Higher Education) for his helps in taking ESM photography and editing the manuscript. Authors also thankful to reviewers for their valuable comments and advises.

References

- Aghanabati, A., 2004. Geology of Iran. Geological Survey of Iran, Tehran, Iran, 430 pp.
- Alavi, M., 1991. Sedimentary and structural characteristics of the Paleo-Tethys remnants in northeastern Iran. Geological Society of America Bulletin, 103: 983-992.
- Alexander, C.I., 1929. Ostracoda of the Cretaceous of north Texas. University of Texas Bulletin, 2907: 1-137.
- Amirshahkarami, M., Naimi, M., 2016. Paleoecology and biostratigraphic data of the large benthic foraminifera in the Oligocene-Miocene Qom Formation in Kahak area, in the Urumieh-Dokhtar Province in Iran. Stratigraphy and Sedimentology Researches, 32: 91-108.
- Apostolescu, V., 1961. Contribution à l'étude paléontologique (ostracodes) et stratigraphique des bassins crétacés et tertiaires de l'Afrique occidentale. Révue Institut français du pétrole, 16: 779-867.
- Ayress, M.A., 2006. Ostracod biostratigraphy of the Oligocene-Miocene (upper Waitakian to lower Otaian) in southern New Zealand. New Zealand Journal of Geology & Geophysics, 49: 359-373.
- Babinot, J.F., Moullade, M., Tronchetti, G., 2007. The upper Bedoulian and lower Gargasian Ostracoda of the Aptian stratotype: Taxonomy and biostratigraphic correlation. Carnets de Géologie, 5: 1-35.
- Baird, W., 1850. The natural history of the British Entomostraca. The Ray Society, London.
- Barra, D., Bonaduce, G., 2001. Some new and poorly known Middle Miocene ostracods of Malta Isle. Bollettino Società Paleontologica Italiana, 40: 55-74.
- Bassant, P., Van Buchem, F.S.P., Strasser, A., Görür, N., 2005. The stratigraphic architecture and evolution of the Burdigalian carbonate—siliciclastic sedimentary systems of the Mut Basin, Turkey. Sedimentary Geology, 173: 187-232.
- Benson, R.H., Coleman, G., L., 1963. Recent marine ostracodes from the Eastern Gulf of Mexico. The University of Kansas Paleontological Contributions, 2: 1-52.
- Bhatia, S.B., 1984. Ostracode faunas of the Indian Subcontinent- Their paleozoogeographic and paleoecologic implications. Journal of the Paleontological Society of India, 20: 1-8.
- Bonaduce, G., Ruggieri, G., Russo, A., 1987. The ostracode genus *Mutilus* and some so-called *Mutilus* from the Mediterranean Miocene-Pleistocene. Bollettino della Società Paleontologica Italiana, 26: 251-268.
- Bosellini, F.R., Perrin, C., 2008. Estimating Mediterranean Oligocene-Miocene sea-surface temperatures: An approach based on coral taxonomic richness. Palaeogeography, Palaeoclimatology, Palaeoecology, 258: 71-88.
- BouDagher-Fadel, M.K., 2008. Evolution and geological significance of larger benthic foraminifera. Elsevier, Netherlands, 540 pp.
- Brady, G.S., Crosskey, H.W., Robertson, D., 1874. A Monograph of the Post-tertiary Entomostraca of Scotland: Including Species from England and Ireland. Palaeontographical society, London, 298 pp.
- Brandano, M., Tomassetti, L., Bosellini, F., Mazzucchi, A., 2009. Depositional model and paleodepth reconstruction of a coral-rich, mixed siliciclastic-carbonate system: the Burdigalian of Capo Testa (northern Sardinia, Italy). Facies, 56: 433-444.
- Brünnich, M.T., 1772. Zoologiae fundamenta praelectionibus academicis accommodata. Grunde i Dyrelaeren. Apud Fieder. Christ. Pelt., Hafniae et Lipsiae (= Copenhagen and Leipzig).
- Coles, G., Whatley, R., 1989. New Palaeocene to Miocene genera and species of Ostracoda from DSDP sites in the North Atlantic. Revista Española de Micropaleontología, 21: 81-124.
- Coryell, H.N., Sample, C.H., Jennings, P.H., 1935. Bairdoppilata, a new genus of ostracoda, with two new species. American Museum Novitates, 777: 1-6.
- Dabaghi Sadr, F., Schmiedl, G., 2017. Paleoenvironmental reconstruction of the Oligocene-Miocene deposits of the Tethyan Seaway, Qom Formation, Central Iran, EGU General Assembly Conference Abstracts, p. 1980.
- Dall'Antonia, B., 2003a. Deep-sea ostracods as indicators of palaeoceanographic changes: a case history from the middle-late Miocene of southern Italy (Central Mediterranean). Terra Nova, 15: 52-60.
- Dall'Antonia, B., 2003b. Miocene ostracods from the Tremiti Islands and Hyblean Plateau: biostratigraphy and description of new and poorly known species. Geobios, 36: 27-53.
- Daneshian, J., Ghanbari, M., 2017. Stratigraphic distribution of planktonic foraminifera from the Qom Formation: A case study from the Zanzan area (NW Central Iran). Neues Jahrbuch für Geologie und Paläontologie - Abhandlungen, 283: 239-254.
- Daneshian, J., Ramezani Dana, L., Sadler, P., 2017. A composite foraminiferal biostratigraphic sequence for the Lower Miocene deposits in the type area of the Qom Formation, central Iran, developed by constrained optimization (CONOP). Journal of African Earth Sciences, 125: 214-229.
- Danielopol, D.L., Gross, M., Piller, W.E., 2007. Taxonomic diversity of middle Miocene ostracoda assemblages- A useful tool for palaeoenvironmental characterization of the Hainburg Area (Vienna Basin). Joannea Geologie und Paläontologie, 9: 25-30.
- Donze, P., 1965. Espèces nouvelles d'Ostracodes des couches de base du Valanginien de Berrias (Ardèche). Travaux des

- Laboratoires de Géologie de la Faculté des Sciences de Lyon, Nouvelle Série, 12:87-107.
- Elawa, A.M.T., 2004. Quantitative analysis and palaeoecology of Eocene Ostracoda and benthonic foraminifera from Gebel Mokattam, Cairo, Egypt. *Palaeogeography, Palaeoclimatology, Palaeoecology*, 211:309-323.
- Gebhardt, H., 2004. Late Oligocene to Early Miocene foraminifers and ostracods from Karben (Wetterau, Hesse State, Germany): stratigraphic occurrence and palaeoecological implications. *Paläontologische Zeitschrift*, 78:233-279.
- Gopalakrishna, K., Shabi, B., Mahesh Bilwa, L., 2008. Distribution of ostracoda assemblages along the nearshore and offshore areas of Malabar Coast, Kerala (West coast of India). *Indian Journal of Marine Sciences*. 37:298-306.
- Gross, M., 2004. Contribution to the Ostracode Fauna (Crustacea), Paleocology and Stratigraphy of the Clay Pit Mataschen (Lower Pannonian, Styrian Basin, Austria). *Joannea Geologie und Paläontologie*, 5:49-129.
- Gross, M., 2008. A limnic ostracoda fauna from the surroundings of the central paratethys (Late Middle Miocene/Early Late Miocene; Styrian Basin; Austria). *Palaeogeography, Palaeoclimatology, Palaeoecology*, 264:263-276.
- Guernet, C., 2005. Ostracoda and stratigraphy of mediterranean neogene and quaternary. *Revue de Micropaléontologie*, 48:83-121.
- Guha, D., 1968. On the Ostracoda from Neogene of Andaman islands. *Geological Society of India*, 9:58-66.
- Hanai, T., 1957. Studies on the Ostracoda from Japan. I. Subfamily Leptocytherinae, new subfamily. *Journal of the Faculty of Science, University of Tokyo*, 10:431-469.
- Hassani, M.-J., 2012. Biostratigraphy, paleoecology and chemostratigraphy of the Qom Formation deposits in Kerman Province, Ph. D. Thesis, Department of Geology. Shahid Bahonar University of Kerman, Iran, Kerman, p. 398.
- Hosseinipour, F., 2004. The study of biostratigraphy and paleoecology of Oligo-Miocene deposits at North and East of the Sirjan, Department of Geology. Shahid Bahonar University of Kerman, Kerman, p. 178.
- Hosseinipour, F., Vaziri, M.R., Hassani, M.J., 2010. Oligo-Miocene ostracoda and their paleoecology in the Bujan Area, Sirjan. *Sedimentary Facies*, 2:163-172.
- Howe, H.V., Chambers, J., 1935. Louisiana Jackson Eocene Ostracoda. *Louisiana Geological Survey Geological Bulletin*, 5:1-61
- Howe, H.V.W., Law, J.M., 1936. Louisiana Vicksburg Oligocene Ostracoda. *Department of Conservation, Louisiana Geological Survey*, 75 pp.
- Howe, R.C., 1963. Type saline Bayou Ostracoda of Louisiana. *Louisiana Geological Survey Geological Bulletin*, 62 pp.
- Irizuki, T., Kusumoto, M., Ishida, K., Tanaka, Y., 2007. Sea-level changes and water structures between 3.5 and 2.8 Ma in the central part of the Japan Sea Borderland: Analyses of fossil Ostracoda from the Pliocene Kuwae Formation, Central Japan. *Palaeogeography, Palaeoclimatology, Palaeoecology*, 245:421-443.
- Irizuki, T., Taru, H., Taguchi, K., Matsushima, Y., 2009. Paleobiogeographical implications of inner bay Ostracoda during the Late Pleistocene Shimosueyoshi transgression, Central Japan, with significance of its migration and disappearance in eastern Asia. *Palaeogeography, Palaeoclimatology, Palaeoecology*, 271:316-328.
- Irizuki, T., Yamada, K., Maruyama, T., Ito, H., 2004. Paleoecology and Taxonomy of Early Miocene Ostracoda and Paleoenvironments of the Eastern Setouchi Province, Central Japan. *Micropaleontology*, 50:105-147.
- Jamshidi, K.H., Haddadan, M., 1997. Sirjan, in: Sabzehei, M. (Ed.), *Geological Map of Iran*, 1:100 000 series. GSI, Tehran, Iran.
- Jamshidi, K.H., Zhorab, E., Haddadan, M., 1977. Goleghar, in: Sabzehei, M. (Ed.), *Geological map of Iran*, 1/100000 series. GSI, Tehran.
- Jones, T.R., 1849. *A Monograph of the Entomostraca of the Cretaceous Formation of England*. C. and J. Adlard, Printers, Bartholomew Close, London, 90 pp.
- Karami-Movahed, F., Aleali, M., Ghazanfari, P., 2016. Facies Analysis, Depositional Environment and Diagenetic Features of the Qom Formation in the Saran Semnan, Central Iran. *Open Journal of Geology*, 06: 349-362.
- Khalaf, S.K., 1984. Middle Miocene ostracoda from Northern Iraq, Department of Geology. University of Hull, Yorkshire, England, p. 496.
- Khalaf, S.K., 1988. Middle Miocene ostracoda from northern Iraq. Elsevier, Netherlands, p. 1113-1124.
- Khalaf, S.K., 1989. The Ostracod Genus *Actinocythereis* From The Middle Miocene of Northern Iraq. *Journal of Micropalaeontology* 8, 135-142.
- Kondo, H., Toyofuku, T., Ikeya, N., 2005. Mg/Ca ratios in the shells of cultured specimens and natural populations of the marine ostracode *Xestoleberis hanai* (Crustacea). *Palaeogeography, Palaeoclimatology, Palaeoecology*, 225:3-13.
- Kumar, A., Kumar Saraswati, P., 1977. Response of larger foraminifera to mixed carbonate siliciclastic environments an example from the Oligocene-Miocene sequence of Kutch India. *Palaeogeography, Palaeoclimatology, Palaeoecology*. 136:53-65.
- Latreille, P., 1803. *Histoire naturelle, générale et particulière, des crustacés et des insectes*. De Limprimerie Dr F. Dufart, Paris.
- Maddocks, R.F., 1969. Revision of Recent Bairdiidae (Ostracoda). *Bulletin of the United States National Museum*, 295:1-126.

- Mandelstam, M., 1958. New genera and species of Ostracoda in microfauna of the USSR., 9:277-278.
- Matzke-Karasz, R., Martens, K., Schudack, M., 2005. Ostracodology – Linking Bio- and Geosciences. Springer, Berlin, 272 pp.
- Matzke-Karasz, R., Schudack, M., Martens, K., 2007. Ostracodology in time and space: looking back on fifteen International Symposia on Ostracoda, and the times in between. *Hydrobiologia*, 585:1-11.
- Mazzini, I., 2005. Taxonomy, biogeography and ecology of quaternary Benthic Ostracoda (Crustacea) from circumpolar deep water of the Emerald Basin (Southern Ocean) and the S Tasman Rise (Tasman Sea). *Senckenbergiana maritima*, 35:1-119.
- McKenzie, K., 1967. Recent Ostracoda from Port Phillip Bay, Victoria. *Proceedings of the Royal Society of Victoria*, 80:61-106.
- Mohajjel, M., Fergusson, C.L., Sahandi, M.R., 2003. Cretaceous – Tertiary convergence and continental collision, Sanandaj – Sirjan Zone, western Iran. *Journal of Asian Earth Sciences*, 21:397-412.
- Mohammadi, E., 2014. Systematics and paleoecology of the ostracods and foraminifera of the Oligo-Miocene Qom Formation in Qom and Esfahan-Sirjan sedimentary basins, Department of Geology. Shahid Bahonar University of Kerman, Kerman, p. 362.
- Mohammadi, E., Ameri, H., 2015. Biotic components and biostratigraphy of the Qom Formation in northern Abadeh, Sanandaj–Sirjan fore-arc basin, Iran (northeastern margin of the Tethyan Seaway). *Arabian Journal of Geosciences*, 8:10789-10802.
- Moore, R.C., 1961. *Treatise on Invertebrate Paleontology Part Q Arthropoda 3 Crustacea Ostracoda*. University of Kansas & The Geological Society of America, USA, 442 pp.
- Mostafawi, N., Colin, J.-P., Babinot, J.-F., 2005. An account on the taxonomy of ostracodes from recent reefal flat deposits in Bali, Indonesia. *Revue de Micropaléontologie*, 48:123-140.
- Müller, G.W., 1894. *Die Ostracoden des Golfes von Neapel und der angrenzenden Meeres-abschnitte (Vol. 21)*. R. Friedlander. Verlag von R. Friedlander & Sohn, Berlin.
- Nabavi, M.H., 1976. A foreword to geology of Iran. Geological Survey of Iran, Tehran, Iran.
- Neviani, A., 1928. Ostracodi fossili d'Italia: 1.-Vallebiaja (Calabiano). *Pontifica Academica dell Science (Rome)*, 11:1-120.
- Norman, A.M., 1865. Report of deep-sea dredging on the coast of Northumberland and Durham, British Association for the Advancement of Science Report, 34th Meeting. British Association for the Advancement of Science Report, London, p. 189-193.
- Oertli, H.J., 1956. Ostrakoden aus der Oligozänen und Miozänen Molasse der Schweiz: Inauguraldissertation, Department of Geology. Munchen, p. 271.
- Ozawa, H., Kamiya, T., 2001. Palaeoceanographic records related to glacio-eustatic fluctuations in the Pleistocene Japan Sea coast based on ostracods from the Omman Formation. *Palaeogeography, Palaeoclimatology, Palaeoecology*, 170:27-48.
- Pieri, V., Martins, K., Stoch, F., Rossetti, G., 2009. Distribution and ecology of non-marine ostracods (Crustacea, Ostracoda) from Friuli Venezia Giulia (NE Italy) *Journal of Limnology*, 68:1-15.
- Pipík, R., Bodergat, A.-M., 2004. *Euxinocythere* (Ostracoda, Cytheridae, Leptocytherinae) in the Upper Miocene of the Turiec Basin (Slovakia): Taxonomy and Paleoecology *Revue de Micropaléontologie*, 47:36-52.
- Pokorný, V., 1955. Contribution to the morphology and taxonomy of the subfamily Hemicytherinae Puri. *Acta Universitatis Carolinae*, 3:1-35.
- Puri, H.S., 1953. The ostracode genus *Trachyleberis* and its ally *Actinocythereis*. *American Midland Naturalist*, 171-187.
- Puri, H.S., 1954. Contribution to the study of The Miocene of the Florida Panhandle, 3, Ostracoda. *Florida Geological Survey Bulletin*, 36:213 -345.
- Reeves, J.M., Chivas, A.R., Garcia, A., De Deckker, P., 2007. Palaeoenvironmental change in the Gulf of Carpentaria (Australia) since the last interglacial based on Ostracoda. *Palaeogeography, Palaeoclimatology, Palaeoecology*, 246:163-187.
- Reuss, A., 1850. Die fossilen Entomostraceen des österreichischen Tertiärbeckens. *Haidingers Naturwissenschaftliche Abhandlungen*, 3:41-92.
- Reuter, M., Piller, W.E., Harzhauser, M., Mandic, O., Berning, B., Rögl, F., Kroh, A., Aubry, M.P., Wielandt-Schuster, U., Hamedani, A., 2007. The Oligo-/Miocene Qom Formation (Iran): evidence for an early Burdigalian restriction of the Tethyan Seaway and closure of its Iranian gateways. *International Journal of Earth Sciences*, 98:627-650.
- Roospeykar, A., Moghaddam, I.M., 2016. Benthic foraminifera as biostratigraphical and paleoecological indicators: An example from Oligo-Miocene deposits in the SW of Zagros basin, Iran. *Geoscience Frontiers*, 7:125-140.
- Ruggieri, G., 1962. Gli Ostracodi marini del Tortonian (Miocene medio-superiore) de Enna nella Sicilia orientale. *Palaeontographia Italica*, 56:1-68.
- Ruggieri, G., 1992. Considerazioni tassonomiche sur Ostracodi neogenici e pleistocenici risultate dalla revisione di

- vecchi lavori della scrivente. Bollettino della Societa Paleontologica Italiana, 31:175-188.
- Ruggieri, G., Russo, A., Bossio, A., 1977. *Pokornyella italica* (Ostracoda, Podocopida) nuova specie del Miocene superiore mediterraneo. Bollettino della Societa Paleontologica Italiana, 16:129-136.
- Sadeghi, R., Vaziri-Moghaddam, H., Taheri, A., 2010. Microfacies and sedimentary environment of the Oligocene sequence (Asmari Formation) in Fars sub-basin, Zagros Mountains, southwest Iran. *Facies*, 57:431-446.
- Sardarabadi, S., Jahani, D., Ghadimvand, N.K., 2016. Facies, Depositional Environment and Diagenesis of the Qom Formation in Rameh Section (Northeastern Garmsar). *Open Journal of Geology*, 6:1240-1256.
- Sarkarinejad, K., Faghih, A., Grasmann, B., 2008. Transpressional deformations within the Sanandaj–Sirjan Metamorphic Belt (Zagros Mountains, Iran). *Journal of Structural Geology*, 30:818-826.
- Sars, G., 1866. Oversigt af Norges marine ostracoder. *Forh Vidensk Selsk Krist*, 7:1-130.
- Sars, G.O., 1866. Untersuchung der norwegischen Hochland Seen und Küsten auf Crustaceen. Aus d. Dän. von Dr. Haupt, Berlin.
- Sartori, L., Coimbra, J.C., 2010. A new Holocene neritic species of *Australoecia* Mckenzie (Ostracoda, Pontocypridae) from the Brazilian shelf. *Revista Brasileira de Paleontologia*, 13:115-122.
- Sato, T., Kamiya, T., 2006. Taxonomy and geographical distribution of recent *Xestoleberis* species (Cytheroidea, ostracoda, crustacea) from Japan. *Paleontological Research*, 11:183-227.
- Skogsberg, T., 1928. Studies on marine ostracods, Part 11. External morphology of the genus *Cythereis*, with descriptions of 21 new species. California Academy of Sciences Occasional Paper, 15:1-155.
- Stampfli, G.M., 1978. Etude ge'ologique ge'nerale de l'Elbourz oriental au sud de Gonbad-e-Qabus (Iran NE), Departamento geologico. Universite' de Gene've, Geneve, p. 329.
- Stancheva, M., 1968. New data on the subfamily Leptocytherinae Hanai, 1957. *Bulletin of the Geological Institute of the Bulgarian Academy of Sciences*, 17:37-48.
- Stocklin, J., 1968. Structural history and tectonics of Iran. a review. *American Association Petroleum Geology Bulletin*, 52:1229–1258.
- Stöcklin, J., Setudehnia, A., 1971. Stratigraphic Lexicon of Iran. Geological Survey of Iran, Iran, 373 pp.
- Sylvester-Bradley, P.C., 1948. Bathonian ostracods from the Boueti bed of Langton Herring, Dorset. *Geological Magazine*, 85: 185-204.
- Torkzadeh, E., Hassani, M.J., Vaziri, M.R., dastanpour, M., 2011. Early Miocene ostracoda and their paleoecology in the Jefriz Areae, Northe of the Baft, Kerman. *Sedimentary Facies*, 3:41 - 51.
- Van den Bold, W.A., 1958. Ostracoda of the Brasso Formation of Trinidad. *Micropalaentology*, 4:319-418.
- Van den Bold, W.A., 1965. Middle Tertiary Ostracoda from Northwestern Puerto Rico. *Micropalaentology*, 11:381-414.
- Van den Bold, W.A., 1967. Ostracoda of the Gatún Formation, Panama. *Micropaleontology*, 13:306-318.
- Van den Bold, W.A., 1970. The Genus *Costa* (Ostracoda) in the Upper Cenozoic of the Caribbean Region. *Micropaleontology*, 16:61-75.
- Van den Bold, W.A., 1972. Ostracoda of the La Boca Formation, Panama Canal Zone. *Micropaleontology*, 18:410-442.
- Van Morkhoven, F.P., 1963. Post-Palaeozoic Ostracoda: their morphology, taxonomy and economic use, Vol.1. Elsevier Publishing Company, Amsterdam, 263 pp.
- Westphal, H., 2006. Limestone–marl alternations as environmental archives and the role of early diagenesis: a critical review. *International Journal of Earth Sciences*, 95:947-961.
- Westphal, H., Munnecke, A., 2003. Limestone-marl alternations: A warm-water phenomenon? *Geology*, 31:263-266.
- Whatley, R., Maybury, C., 1990. Ostracoda and global events. Chapman and Hall, London, 621 pp.
- Whatley, R.C., 1991. The platycopid signal: a means of detecting kenoxic events using Ostracoda. *Journal of Micropalaentology*, 10:181-185.
- Wilson, B., Coimbra, J.C., Hayek, L.-A.C., 2014. Ostracoda (Arthropoda, Crustacea) in a Miocene oxygen minimum zone, Trinidad, West Indies: A test of the Platycopid Signal Hypothesis. *Journal of South American Earth Sciences*, 54: 210-216.
- Wouters, K., 1973. Le genre *Aurila* Pokorny (crustacea, ostracoda) dans Le Plio-Pléistocène de Belgique. *Revue de Micropaleontologie*, 16: 194-201.
- Yamada, K., Tanaka, Y., Irizuki, T., 2005. Paleooceanographic shifts and global events recorded in late Pliocene shallow marine deposits (2.80–2.55 Ma) of the Sea of Japan. *Palaeogeography, Palaeoclimatology, Palaeoecology*, 220: 255-271.
- Zágoršek, K., Yazdi, M., Bahrami, A., 2017. Cenozoic cyclostomatous bryozoans from the Qom Formation (Chahriseh area northeast of Isfahan, central Iran). *Neues Jahrbuch für Geologie und Paläontologie - Abhandlungen*, 283: 109-118.
- Zhao, Q., Whatley, R.C., 1997. Distribution of the ostracod genera *Krithe* and *Parakrithe* in bottom sediments of the East China and Yellow seas. *Marin Micropaleontolog*, 32: 195-207.